



## 2019 Project Review Sheet (2020 Construction)

### City Council District 5 (Ballot # 5C)

<b>Project #</b>	19-183
<b>Project Title:</b>	Intstall a sidewalk
<b>Location:</b>	Neighborhood: Lake City, 98125 Area: Public right of way on 28th ave NE between 120th and 121st (behind Starbucks)

### SDOT Contact Information

SDOT Reviewer Name: David Burgesser

Reviewer Phone Number: (206) 684-8058

Review Date: June 28<sup>th</sup>, 2019

### SDOT Project Summary

SDOT approves project

- Yes
- Yes, with revisions
- No

Comments: A traditional concrete, curb-and-gutter sidewalk with a planting strip is not feasible within the budgetary constraints of the Your Voice, Your Choice program. As an alternative, an at-grade asphalt walkway with wheel stop curbing can be installed to complete the sidewalk connection on the east side of 28<sup>th</sup> Ave NE north of NE 120<sup>th</sup> St.

There is an opportunity to partner with another program:

- Yes
- No

Partnering Program:

**Total Project Cost: \$109,000**

YVYC 2019: Project 19-183, Public right of way on 28th ave NE between 120th and 121st (behind Starbucks)



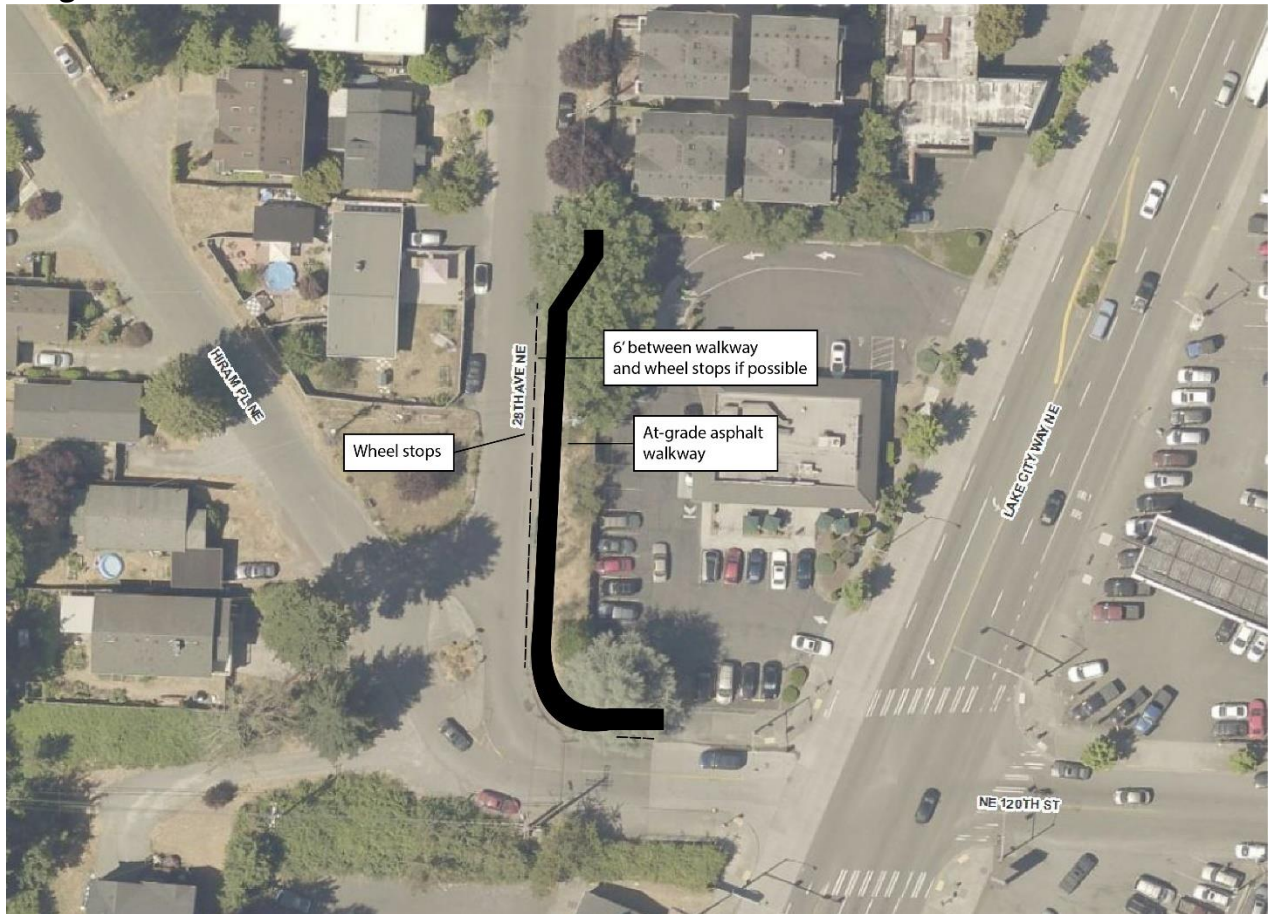
**Solution and Comments:**

This review has been completed for use in the 2019 Your Voice, Your Choice: Parks & Streets process.

Based on site conditions and the budget available through the Your Voice, Your Choice program, SDOT recommends installing an asphalt walkway with wheel stop curbing to connect the existing sidewalk on the north side of NE 120<sup>th</sup> St with the existing sidewalk on the east side of 28<sup>th</sup> Ave NE. This walkway will provide a more comfortable and accessible pedestrian connection between 28<sup>th</sup> Ave NE and the businesses and bus stops on Lake City Way NE. A gap between the wheel stops and paved walkway will also provide space for community-led landscaping.



Image:



YVYC 2019: Project 19-183, Public right of way on 28th ave NE between 120th and 121st (behind Starbucks)



## Information Provided by Community Members

---

**Project Idea:** This project would involve installation of a sidewalk and planting strip to improve pedestrian safety and usability.

**Need for Project:** This is a heavy pedestrian traffic area for people walking to the bus stop on LCW and 120th and to Starbucks, including several elderly neighbors who are forced to walk in the street. Additionally, this area has been previously used as an encampment site and caring for this area would help deter such encampments from setting up.

**Community Benefit from Project:** This project benefits the safety entire Lake City community by deterring the set up of unsanctioned encampments. It also benefits pedestrian traffic (especially elderly neighbors) who use this route to access LCW.

YVYC 2019: Project 19-183, Public right of way on 28th ave NE between 120th and 121st (behind Starbucks)



### Risk Registry

<b>SDOT Review</b>	<b>Drainage impacts</b>	<b>Constructability</b>	<b>Community process</b>
Low – Would use SDOT standard materials for a walkway.	High – Walkway could disrupt drainage flow patterns between 28 <sup>th</sup> Ave NE and NE 120 <sup>th</sup> St.	High – Grade differences could require regrading or special engineering to meet ADA standards.	Low – Project would not remove parking and would have minimal impacts on adjacent properties.

### Cost Estimate

<b>Design Phase</b>	
Preliminary Engineering (Survey) Costs	\$1,000
Project Management Costs (City Labor)	\$4,000
Design Costs (Consultant Fees, if externally designed, internal labor otherwise)	\$12,000
<b>Subtotal – Design Phase Costs</b>	\$17,000
Design Contingency (10% of Design Phase Subtotal)	\$1,700
<b>Total Design Phase Costs</b>	\$18,700
<b>Construction Phase</b>	
Construction Costs (include urban forestry, signs & markings, traffic control, layout or construction staking as necessary)	\$50,000
Drainage Costs	\$10,000
Estimating Contingency (10-20%)	\$4,500
<b>Subtotal – Construction Costs</b>	\$64,500
Construction Management (10-25% of Construction Cost)	\$12,900
Construction Contingency (20%)	\$12,900
<b>Total Construction Phase Costs</b>	\$90,300
<b>Total Project Cost = Total Design and Construction Phase Costs</b>	\$109,000

YVYC 2019: Project 19-183, Public right of way on 28th ave NE between 120th and 121st (behind Starbucks)